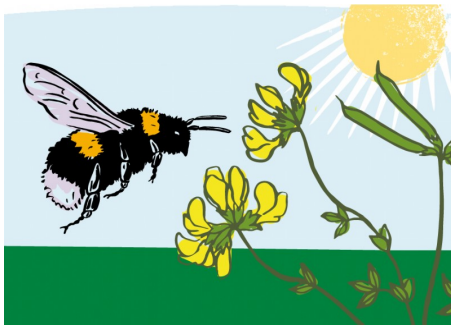


www.cotswoldseeds.com
Tel: 01608 652552



Cotswold Seeds Ltd
The Cotswold Business Village
Moreton in Marsh,
Gloucestershire GL56 0JQ

Resource Protection & Grassland: Sowing & Growing



Suitable soils

These mixes are suitable for most soil types where the pH is 5.5 or above.

When to sow

Sow between March and early May, or August and late September. Later sowings are slower to establish and can be vulnerable to slugs.

How to sow

Many of the species included have small seeds and should therefore be surface sown onto a fine, firm seedbed at not more than 1-2cm. If broadcasting it is best to lightly harrow and roll twice after sowing.

Management

Once established, Buffer Strips only need to be cut once a year after mid July. If sowing a six metre margin we recommend leaving the outer two or three metres uncut to provide tussocky cover for insects and wildlife.

Beetle Banks may be cut two or three times in the first year for annual weed control but, once established, are cut only to prevent the encroachment of woody and suckering weeds.

Recreating Grassland may be mown for hay (or silage) in late June and can also be grazed or topped if needed. Species Rich Parkland Grassland is less productive and may be grazed occasionally or topped to keep the sward down.

Nutrient requirements

No fertiliser is used for these mixes unless forage is required. If so, maintain ADAS Index 2 for P and K.

Yield potential

Compared to productive leys the grassland mixes here will be considerably lower yielding at around 6-10t DM/ha. The Recreating Grassland can produce 4-5 round bales (450-500kgs) per acre.

Date Posted: 22nd January 2018